



Rockwood School District Partners in Education

25 Years of Business Involvement
Career Awareness and Engagement
Model, Plan, Implementation



Partners in Education - PIE

- Link K-12 classrooms with community
- Enhance curriculum with “real world” experiences
- Make learning relevant and meaningful
- Support K-12 curriculum with current and relevant resources
- Provide career awareness opportunities
- Create climate of involvement and interaction between businesses/schools

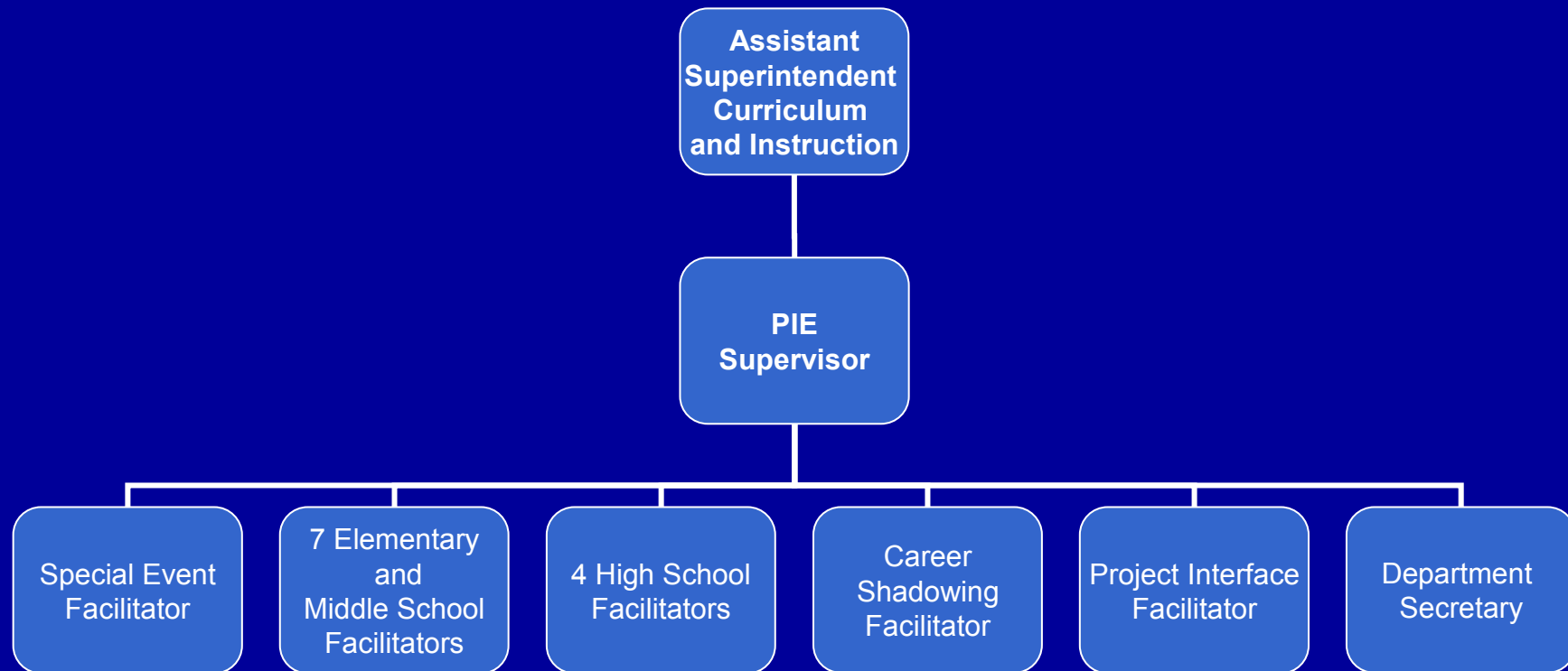


PIE – What is it?

- Department within Curriculum and School Leadership
 - 25 years in existence
 - Staff of 16, serves 31 schools
- Community resource support for ALL Rockwood schools and programs
 - 750 business & organizations annually
 - Database of over 3,000 resources
 - Research/Schedule K-12 programs as requested by teachers, principals, coordinators and PTO



PIE –Organizational Model



PIE – How does it work?

- School/Community Facilitator
 - Assigned to a cluster of schools
 - Meets with teachers/administrators to identify resource needs
 - Facilitator researches resources for partnerships
 - Schedules/confirms/tracks activities
 - All activities are curriculum impacting

PIE Community Relationships

- Business – Chambers of Commerce
- Government – Local and National Offices
- Universities – Colleges
- Health and Social Agencies (Hospitals)
- Cultural Centers (Plant, Art, Science)
- Professional and Trade Associations/Schools
- Patrons/Parents/Vendors of School District



Impact on Curriculum & Instruction

- 5,500 presentations impacting close to 8,000 classes
 - Classroom Presentations
 - Learning Conferences
 - Special Events
 - Missouri Heritage Days 4th Grade
 - Civil War Days 8th Grade
 - 8th Grade Career Fair
 - Medieval History Days 6th Grade

Career Awareness Partnerships

- Career Fairs for Elementary and Middle School Students
- Career Shadowing for High School Juniors
- Project Interface – High School Internship program, career exploration opportunity resulting in practical arts credit
- Every classroom presenter is encouraged to talk about their career

Career Fairs - Elementary

- Elementary Schools – Fifth Grade
- Business Partners come from parents of students
- Career Paths include:
 - Arts and Communication
 - Business Management, Technology
 - Health Services
 - Human Services
 - Industrial and Engineering Technologies
 - Natural Resources and Agriculture

Career Fair – Middle School

- 8th Grade District Wide
- Off-site Event
- Over 200 Business Partners
- 3 Day Schedule
- Student driven selection
 - Each student selects 3 careers to explore
 - We match students with business partners
 - Small group format



Career Shadowing

- Open to every Junior in the District
- One day (4 – 8) hours spent on-site with business partner
- 25% of all Juniors participate
- Excused absence from school
- Both 1-on-1 and small groups
- Student driven match on career

Project Interface

- Unique internship offered to qualifying high school seniors. Provides students with career exploration opportunities while gaining practical “real world” experience
- Students are partnered with a business professional in the student’s area of interest
- Student complete a custom-designed project developed with input from the business partner
- After successful completion of the 75 hour project the student receives ½ practical arts credit

Project Interface Components

- Packet in folder identifies process and procedures
- Hands-On Learning Project
- Self-Directed Learning
- Life and Work Skills acquired
- Presentation is culmination of Project
- When possible a tangible benefit to the Business Partner is a desired outcome

Project Interface Timeline

- 11 Month Project Timeline
 - Month 1: Initial Invitations
 - Month 2: Introduction Meeting/Application Process
 - Month 3: Application Deadline, Recommendations, Essay
 - Month 4: Screening Interviews
 - Month 4-7: Business Partner Match
 - Month 7: Orientation and Training
 - Month 7–10: Hands on Project Hours
 - Month 10 -11: Final Presentation Training
 - Month 10 - 11 Final Presentations/Evaluations

Partners in Education Partnerships with Parent/Teacher Organizations

- Science Nights
- Reading Week Events
- Learning Conferences
- Speakers for Parent Meetings
- Funding Partnerships

Partners in Education

Partnerships with Business - Benefits

- We offer the opportunity to create relationships with future employees
- We offer the opportunity to:
 - Come into the classroom to tell students about their business and industry
 - Create relationships with students through career exploration
 - Input on written, oral, problem-solving and self-directed learning opportunities



Business Relationships with Rockwood School District

- Monsanto
- Boeing
- Microsoft
- Barnes-Jewish Hospital
- Fox Sports Network
- Sporting News Magazine
- Technisonic Studios
- Republican National Committee
- Land O Lakes
- Wild Canid Center
- Washington University
- University of Missouri – St. Louis
- IBM
- Maritz Motivation Co
- MODOT
- Missouri Corp of Engineers
- Nestle Purina
- Not for Profit Organizations
- St. Louis University
- Pfizer Pharmaceuticals
- FBI
- AG Edwards & Sons/Wachovia
- St. Louis Science Center
- Ameren UE
- American Airlines
- Aventis Pharmaceutical
- Police and Fire Departments
- Local City and County Government
- Big Brothers, Big Sister
- Blue Cross, Blue Shields
- Clear Channel Entertainment
- International Institute
- YMCA
- MasterCard
- Engineering Firms, Architecture Firms
- Law Firms

Funding/Staffing

- Original Funding Source was Community Education department
- 3 Full-time and 13 part-time employees
- Part-time employees work 24 hours per week, 34 weeks of the year
- Full-time supervisor, Secretary and Project Interface Facilitator
- Office resides within Curriculum and Instruction
- High School Facilitators are located at each High School



Thank You

Linda Souder, Sr. Project Interface Facilitator
souderlinda@rockwood.k12.mo.us

Kim Litzau, Supervisor

litzaukim@rockwood.k12.mo.us

Partners in Education Office: 636-938-2348